

## PENLINK

### INTRODUCTION

#### Packaging System Solutions

The integration of slip rings and swivels presents a comprehensive solution for optimizing packaging systems, enhancing efficiency, accuracy, and reliability across various applications. These components provide precision control and seamless transmission of power and media, addressing modern packaging challenges effectively.

This document explores how the integration of slip rings and swivels can enhance various packaging machines, including Flowpack, Thermoforming, Traysealers, Vertical wrappers (VFFS), Stretch film wrappers, and Shrink-Sleeve wrapping-Shrink tunnels.

Discover how these components work together to improve accuracy and reliability in packaging. From ensuring uninterrupted power transmission to facilitating smooth media handling, this integrated solution tackles modern packaging challenges.

For more details or to discuss your specific needs, please send an inquiry to [info@penlink.se](mailto:info@penlink.se), and we will pass it on to our sales team.



#### Did you know?

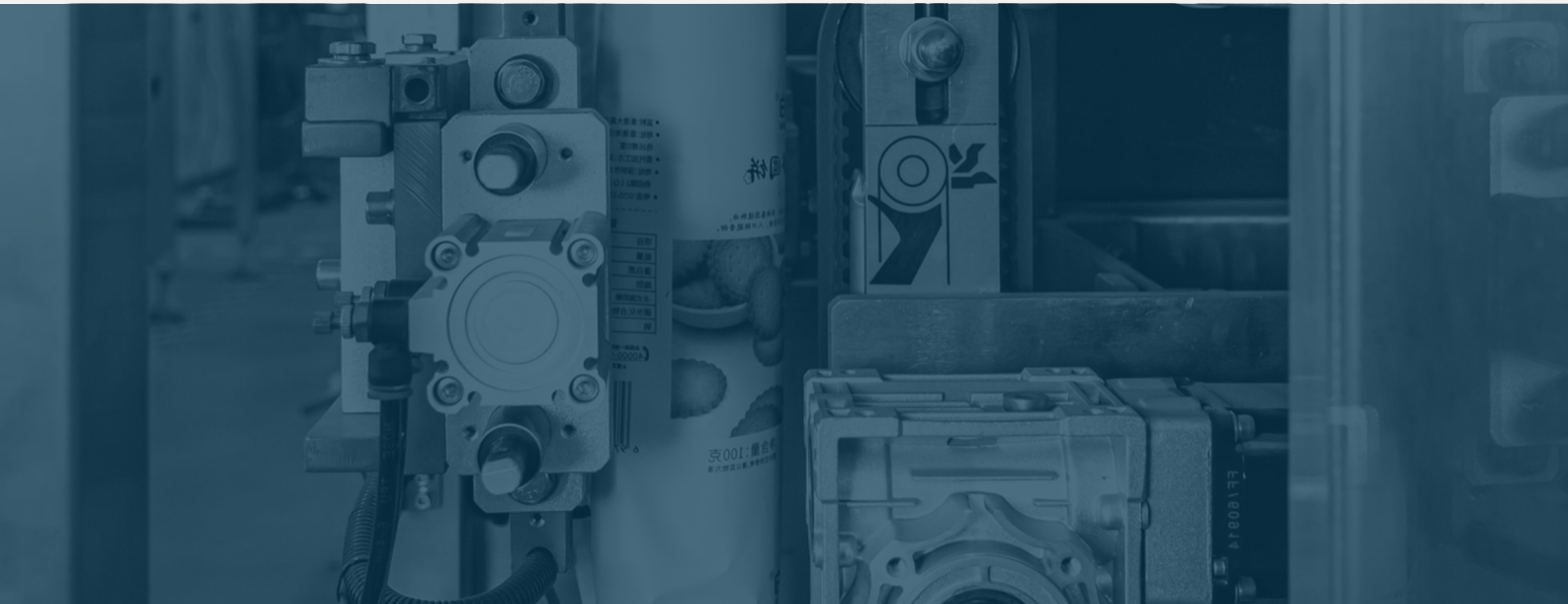
...Our slip rings and swivels minimize maintenance downtime, ensuring seamless operation and maximum productivity in your packaging machinery.

#### Contact Information

**E-mail:** [info@penlink.se](mailto:info@penlink.se)

**Phone:** +46 (0) 8 401 10 10

**Office:** Penlink AB, Västberga Allé 5,  
SE-126 30 Hägersten, Sweden



## PACKAGING SOLUTION

### Optimizing Packaging Machinery with Slip Rings and Swivels

Slip rings and swivels form a dynamic combination in packaging machinery, providing precise control and reliable transmission of media. Our slip rings enable seamless transmission of power and signals between stationary and rotating components, ensuring uninterrupted operation of critical systems such as sensors, actuators, and control mechanisms. Meanwhile, our swivels allow for the smooth transfer of various media.

Our range of slip rings and swivels offers significant advantages in optimizing production across diverse packaging applications. By providing efficient power transmission and reliable media handling capabilities, our products enhance operational reliability and throughput, contributing to improved efficiency and reduced downtime in packaging operations.

Engineered for reliability and efficiency, our slip rings are compact, quick to deliver, and cost-effective, making them ideal for packaging applications. Compliant with CE and ROHS standards, our slip rings offer dependable power transmission for packaging machinery.

Our small swivels are meticulously designed to handle various media, including water, steam, hot oil, pneumatic, and vacuum. Crafted with self-supported designs and featuring balanced mechanical seals, they ensure reliable fluid transfer. These swivels adhere to European standards, guaranteeing optimal performance and compatibility with your packaging machinery.

#### Common Applications:

- Flowpack
- Thermoforming Machines
- Traysealers
- Shrink-sleeve Wrapping & Shrink Tunnels
- Vertical Wrappers (VFFS)
- Stretch Film Wrappers

**PACKAGING SOLUTION****Penlink Slip Rings**

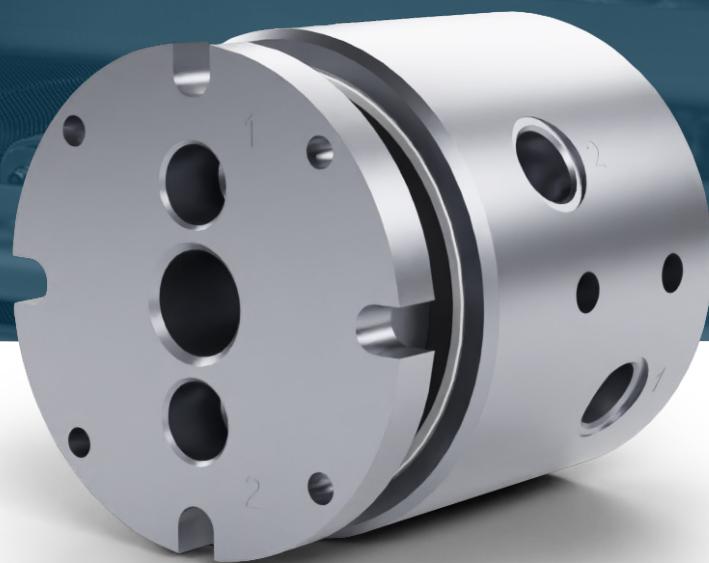
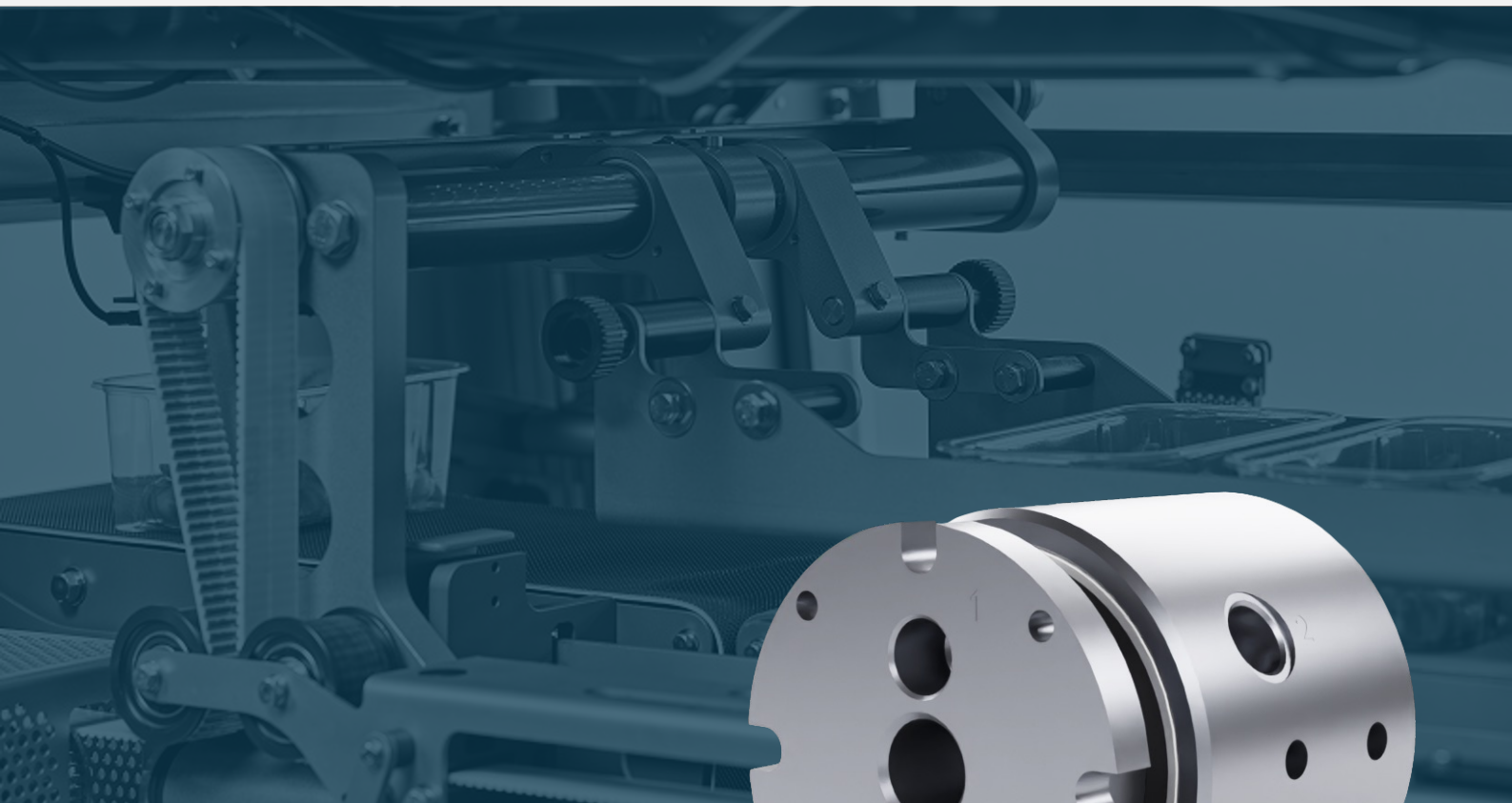
The Compact X Series employs advanced multiple contact point technology, minimizing contact electric resistance between brushes and ring. This feature reduces electrical noise and enhances the slip ring's longevity.

With its small size, fast delivery, and cost-effectiveness, the Compact X Series offers reliable performance. Additionally, it features low friction torque and smooth rotation for seamless operation. Rest assured, our slip rings adhere to CE and ROHS standards for quality assurance.

*\*Merged technical information of some of our standard models, for more detailed info contact our sales team.*



<b>Rated Voltage</b>	240 VAC
<b>Rated Current</b>	2A + 14A
<b>No. of Rings</b>	2-8
<b>Operating Speed</b>	0-400 RPM
<b>Diameter</b>	Ø12-45 mm
<b>Temp. Range</b>	-20°C to 80°C



#### PACKAGING SOLUTION

### Penlink Swivels

Our small swivels are engineered to efficiently handle various media such as water, steam, hot oil, pneumatic, and vacuum. Available in a range of sizes both housing and passages, these swivels ensure seamless transfer of fluids or gases between stationary and rotating components in packaging machinery.

Designed with self-supported configurations, they offer options for single and dual flow models, featuring radial housing connections and balanced mechanical seals. The swivels are designed for easy and quick seal replacement, minimizing downtime during maintenance.

With stainless steel internal parts and vent holes on the housing, they ensure reliable usage even in environments with poor water quality.

**Media Compatibility** Water, Steam, Hot Oil, Pneumatic, and Vacuum

**Pressure Handling** **Water:** 50 bar  
**Steam:** 1 bar  
**Hot Oil:** up to 7 bar

**Temperature Range** **Water:** up to 160°C  
**Steam:** up to 120°C  
**Hot Oil:** up to 160°C

**Operating Speed** **1/4"-3/4":** 3,500 RPM  
**1":** 3,000 RPM  
**1 1/4" – 1 1/2":** 2,500 RPM  
**2":** 750 RPM

**Swivel Construction** → Stainless Steel Internal Parts  
→ Balanced Mechanical Seals  
→ Radial Housing Connections