

PENLINK

PENLINK'S SOLUTIONS FOR INTEGRATION

Penlink has the capability to provide the services of integrated rotary joint solutions! These integrated solutions can be designed based on a sketch or an idea from the customer. We implement different technologies to fulfill our customer's requirement and offer them contacting and non-contacting solutions for all types of electrical power, electrical signals and data, optical signals, media (fluid, gas), RF, encoder feedback and combinations of all these transmission technologies.

We have together with our partners already offered several custom designs for; Wind Power (hydraulic- and electrical pitch control), Medical (imaging), Offshore (cable reels, hose reels, cranes, drilling, ROV), Surveillance (CCTV, pan-tilt, gimbals) and Defense (radar, sight system, weapon systems, gimbals, turrets, armored vehicle), robotic systems and other applications that require continuous rotation.



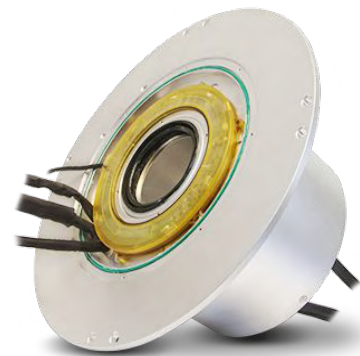
PENLINK

PENLINK'S SOLUTIONS FOR INTEGRATION

INTEGRATED SOLUTION 001

This custom rotary joint offers a large bore electrical slip ring to provide data, power and communication to a SATCOM-platform.

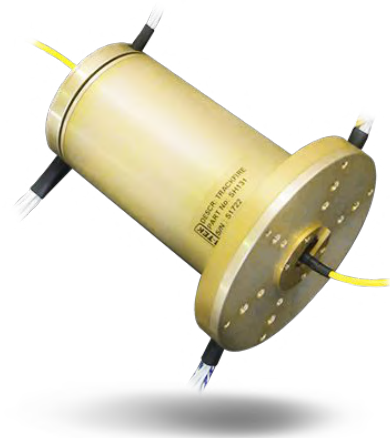
The large bore offers the possibility to put through fiber optic communication or/and RF channels. Integrated with a high accuracy low profile encoder it not only insures easy integration but also reliability in the system.



INTEGRATED SOLUTION 002

The rotary joint includes integration of electrical slip ring, fiber optical rotary joint, pancake encoder into one single unit.

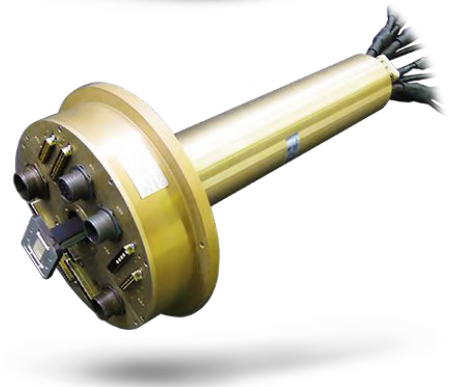
Ruggedised and designed according to tough EMC requirements. The flying leads are fitted into a MIL-38999-connector for both electrical signal and fiber optic.



INTEGRATED SOLUTION 002

The rotary joint includes integration of electrical slip ring waveguide and can be fitted with a fiber optical rotary joint, pancake encoder into one single unit.

Ruggedised and designed according to tough EMC requirements. The flying leads are fitted into a MIL-38999-connector for both electrical signal and fiber optic. On the housing of the rotary joint connectors are fitted for easy installation.



* All parts can be fully modified according to customers specification.

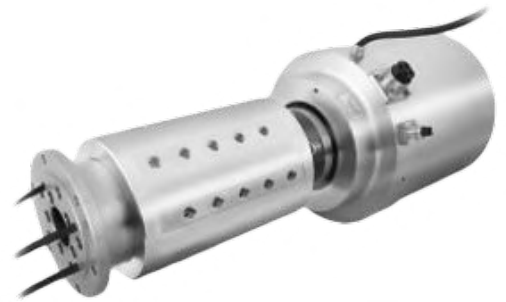
PENLINK

PENLINK'S SOLUTIONS FOR INTEGRATION

INTEGRATED SOLUTION 004

10 passage rotary union designed for an offshore umbilical hose reel application. Features include a custom integrated 10-circuit electrical slip ring designed to meet customer requirements. This unit is meant for the marine industry.

Has 8 - 12 passages, which size goes from 12.70 mm to 19.02 mm The rotation speed (RPM) to be used are 0 to 24 RPM. It handles pressure (PSI) of 200 to 6,499 PSI [14 - 448 BAR]. The material of the product is stainless steel, the through bore is possible to have in 25.4 mm to 73.7 mm.



INTEGRATED SOLUTION 005

4-passage rotary union designed for offshore hose reel applications. Features include a specialized high pressure sealing system and an ATEX-rated electro-optic slip ring with 8 single-mode fiber optic circuits to meet application requirements.

This product is suited for the marine industry, offshore. It has 4 - 5 passages, which sizes can be between 3.18 mm - 6.32 mm. The unit's rotation speed can rotate between 0 to 24 RPM and can take pressure (PSI) 6,500 PSI [448 BAR] and over. It's made of stainless steel and have options for both Fiber optic rotary joints and Slip Rings for integration.



* All parts can be fully modified according to customers specification.

PENLINK

PENLINK'S SOLUTIONS FOR INTEGRATION

INTEGRATED SOLUTION 006

4-passage rotary union designed for a custom offshore umbilical hose reel system. Features include a specialized ATEX-certified explosion-proof electrical slip ring and all-stainless steel construction. This unit is meant for the marine industry.

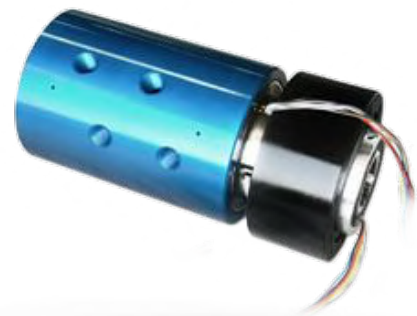
Has 4 - 5 passages, which size goes from 9.53 mm - 12.67 mm The rotation speed (RPM) to be used are 0 to 24 RPM. It handles pressure (PSI) of 6,500 PSI [448 BAR]. The material of the product is stainless steel, the through bore is possible to have in 25.4 mm to 73.7 mm. Possible to integrate with explosion proof and slip rings.



INTEGRATED SOLUTION 007

4 passage rotary union designed for a welding equipment application. The union was engineered to mount to a customer shaft and provide coolant supply/return. Features include a specialized shaft end for mounting and an integrated electrical slip ring for data transfer.

This unit is meant for the Factory Automation industry. Has 4 - 5 passages, which size goes from 6.35 mm - 9.50 mm. The rotation speed (RPM) to be used is 0 to 24 RPM. It handles pressure (PSI) 0 - 199 PSI [0 - 14 BAR]. The material of the product is stainless steel, the through bore is possible to have in 25.4 mm to 73.7 mm. Possible to integrate with slip rings.



* All parts can be fully modified according to customers specification.

PENLINK

PENLINK'S SOLUTIONS FOR INTEGRATION

INTEGRATED SOLUTION 008

2 passage rotary union designed for a rotary filling machine application. Features an internal design for CIP service, integrated slip ring for data transfer and a custom sealed bearing design for a washdown environment.

This unit is meant for the Factory Automation industry. Has 2 passages, which size goes from 50.80 mm and up. The rotation speed (RPM) to be used is 25 to 99 RPM. It handles pressure (PSI) 0 - 199 PSI [0 - 14 BAR]. The material of the product is stainless steel. Possible to integrate with slip rings.



INTEGRATED SOLUTION 009

15 passage rotary union designed for a hose reel application. Features a 2 part construction allowing electrical wiring to pass directly into a junction box mounted to the rotary union housing in the center of the hose reel hub.

This unit is meant for the Oil & Gas industry. Has 13 passages and we can provide more, which size goes from 6.35 mm - 25.37 mm. The rotation speed (RPM) to be used is 0 to 24 RPM. It handles pressure (PSI) 200 - 6,499 PSI [14 - 448 BAR]. The material of the product is Carbon or Alloy Steel, the through bore is possible to have up to 25.4 mm. Possible to integrate with slip rings, drive mechanism and load bearing.



* All parts can be fully modified according to customers specification.

PENLINK

PENLINK'S SOLUTIONS FOR INTEGRATION

INTEGRATED SOLUTION 010

9 passage rotary union designed for a horizontal indexing fixture application for machine tool workholding. Features multiple passages for hydraulic media for independent control of clamping stations and an integrated electrical slip ring for part sensing data transfer.

This unit is meant for the Robotics industry. Has 8 - 12 passages, which size goes from 6.35 mm - 9.50 mm. The rotation speed (RPM) to be used is 0 to 24 RPM. It handles pressure (PSI) 0 - 199 PSI [0 - 14 BAR]. The material of the product is Carbon or Alloy Steel, the through bore is possible to have up to 25.4 mm. Possible to integrate with slip rings, drive mechanism and load bearing.



INTEGRATED SOLUTION 011

2 passage rotary union designed to transfer hydraulics and electrical signals to a hose reel application. Features include an electrical slip ring, custom cap and electrical connections on the housing and shaft.

This unit is meant for the Oil & Gas industry. Has 2 passages, which size goes from 3.18 mm - 6.32 mm. The rotation speed (RPM) to be used is 0 to 24 RPM. It handles pressure (PSI) 200 - 6,499 PSI [14 - 448 BAR]. The through bore is possible to have up to 25.4 mm. Possible to integrate with slip rings.



INTEGRATED SOLUTION 012

This integrated solutions is a offshore electro-optic winch slip ring. It is designed with a smaller ROV in mind, it has an integrated dual channel fiber optical joint to be able to control the ROV.

Contact us for more information!



* All parts can be fully modified according to customers specification.

PENLINK

Let's talk business!

WWW.PENLINK.SE

Get in touch with
us at Penlink!
No question is too
small or big.



EMAIL

info@penlink.se



PHONE

+46 8-551 158 90



HEADQUARTERS

Penlink AB, Vretensborgsvägen 28,
SE-126 30 Hägersten, Sweden



Engineering &
Product design



Inspection &
Quality management



Simulation &
Design verification



Assembly &
Testing



Advanced
Manufacturing



Value-Added
Products & Services