

PENLÍNK

Reliable and efficient power and signal transmission for electrical excavators

At Penlink, we understand the critical role of power and signal transmission in the smooth operation of electrical excavators. This is why we offer high-quality slip rings and rotary unions that meet the specific needs of the industry. Our products are engineered for superior performance, reliability, and durability, with features that include:

- Uninterrupted power transmission
- High speed signal and data transfer
- Increased reliability and durability
- Low electrical resistance and low electrical noise

Optimize the performance of your electrical excavator with Penlink's modified standard slip rings

At Penlink, we acknowledge that every electrical excavator has unique requirements for power transfer. This is why we offer modified standard slip rings that are tailored to meet your equipment's specific needs. Our slip rings are designed for flexibility, reliability, and performance, and offer the following benefits:

- **Modified Solutions:** Our modified standard slip rings are adaptable to the specific requirements and operating conditions of your electrical excavator, and designed for secure and easy installation.
- **Uninterrupted Power Transmission:** Our slip rings guarantee smooth and continuous power transfer, even in harsh conditions.
- **Durability:** Engineered to withstand wear, dust, moisture, and vibration, our products provide long-lasting performance and reliability.
- **Low Electrical Resistance and Noise:** Our slip rings have low electrical resistance and noise, ensuring stable and reliable data transfer.
- **Expert Technical Support:** Our team of experts is available to provide technical support and after-sales services to ensure customer satisfaction.



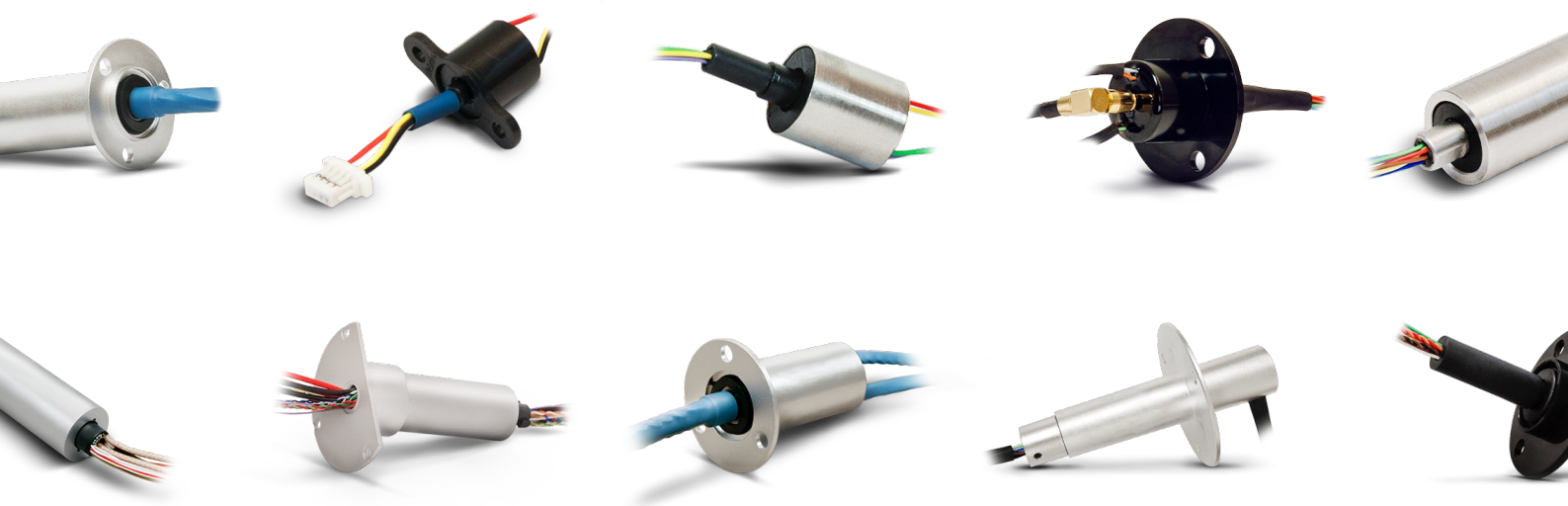
The key to efficient signal transmission for electrical excavators is slip rings

Penlink is committed to providing the best slip ring solutions that meet the specific needs of your electrical excavator. Our broad range of modifications offers the flexibility to match your demands, including data, signals, power, housing material, circuits, connectors, and more.

For signal transmission, we offer a wide range of options, including popular data bus systems such as Profinet, Profibus, Ethercat, and up to 1GB Ethernet. We also support video signals, various HD-SDI signals, and RF signals.

Our slip rings are built for longevity and durability with highly conductive alloys and a housing made of engineering plastics, aluminium, steel, or stainless steel. With IP ratings up to IP67, they provide protection against dust and water damage.

Our circuit rings can deliver up to 400A per circuit with parallel connections if necessary. The fiber contacts feature a maintenance-free design with a minimum lifespan of 80 million revolutions, resulting in a long-lasting and debris-free solution.



Smooth and efficient fluid transfer with Penlink's custom hydraulic swivels

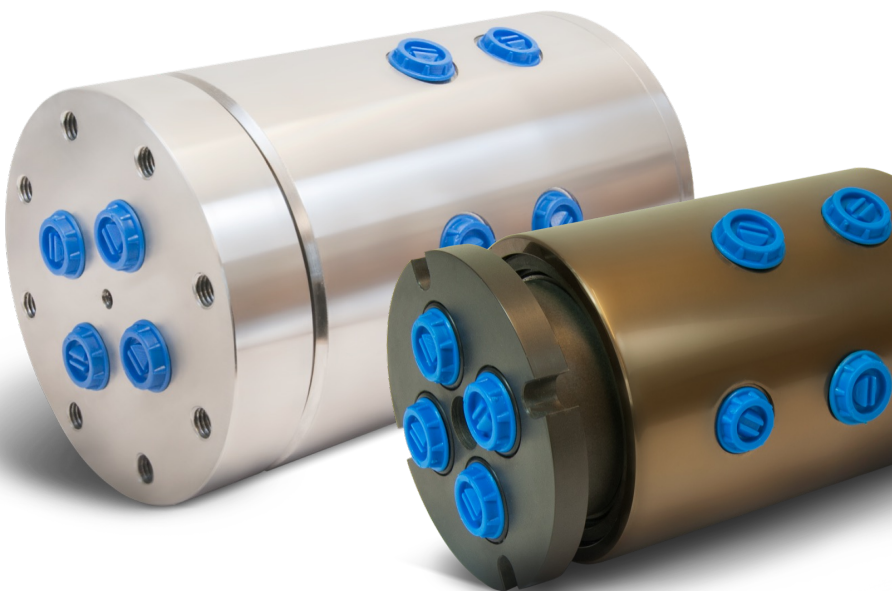
Penlink also offers reliable hydraulic swivels for electrical excavators, providing a seamless solution for fluid transfer in rotating systems. Our hydraulic swivels are designed with advanced technology and are made with high-quality materials to ensure their durability and longevity. They are built to withstand tough working conditions, making them ideal for use in construction, mining, and industrial applications.

Penlink's hydraulic swivels are easy to install, operate, and maintain, making them a cost-effective solution for fluid transfer. They feature smooth and efficient rotation, which helps to minimize leaks and reduces the risk of system failures.

Additionally, our hydraulic swivels are designed to be versatile, compatible with a range of fluids and pressures, and able to rotate 360 degrees, providing complete coverage for your fluid transfer needs.

Our team of experienced engineers and technicians work closely with clients to understand their specific fluid transfer requirements, and then modify the hydraulic swivels to meet those needs. Whether you require swivels with special coatings, unique connections, or custom sizes, Penlink can provide you with the perfect solution.

So, if you are looking for a reliable and efficient solution for fluid transfer in your rotating systems, look no further than Penlink's modified hydraulic swivels.





Get in touch with us today to start
your next project!

WWW.PENLINK.SE



Engineering &
Product design



Inspection &
Quality management



Simulation &
Design
verification



Assembly &
Testing



Advanced
Manufacturing



Value-Added
Products & Services

EMAIL

info@penlink.se

PHONE

+46 (0) 8 401 10 10

HEADQUARTERS

Penlink AB, Vretensborgsvägen 28,
SE-126 30 Hägersten, Sweden