

# P | ELECTRICAL ENCODERS

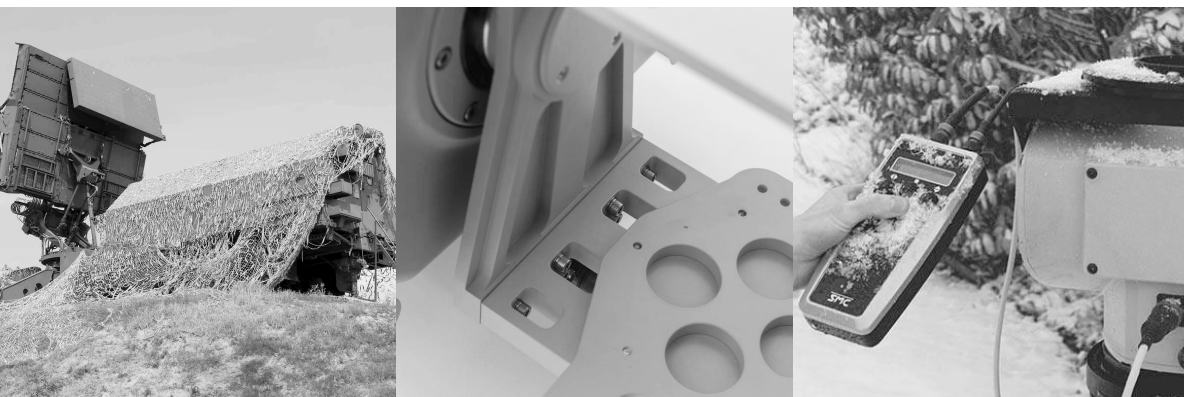
Light, low profile and absolute encoder!

- **Penlink can offer you strong and reliable – high quality electrical encoders!**

Penlink's team work hard to make sure our services offer high standard and reliability, through testing and innovative thinking we work to improve the products all the time. It doesn't matter if your are looking for a standard, custom or integrated solutions we can help you!

We also think it's important to work with our affiliated companies, this means that we work together to reach the same goal. All this is to provide our customers with the best service possible. No matter what your requirements are we have you covered. Our engineers will work together to achieve a design fully adapted to your needs.

## PENLINK



Light, low profile and absolute encoder!

## WORKING TOGETHER TO MAKE GREAT DESIGN

Our team at Penlink uses the most advanced tools to create, debug, maintain and support our customers in the most transparent, agile and effective way.



Transparent Documentation  
& Version Control



Agile Project Management  
& Issue Tracking



World Standard Electronics  
Design Software



Online and Offline  
First-Class Support



# P | ELECTRICAL ENCODERS

Light, low profile and absolute encoder!



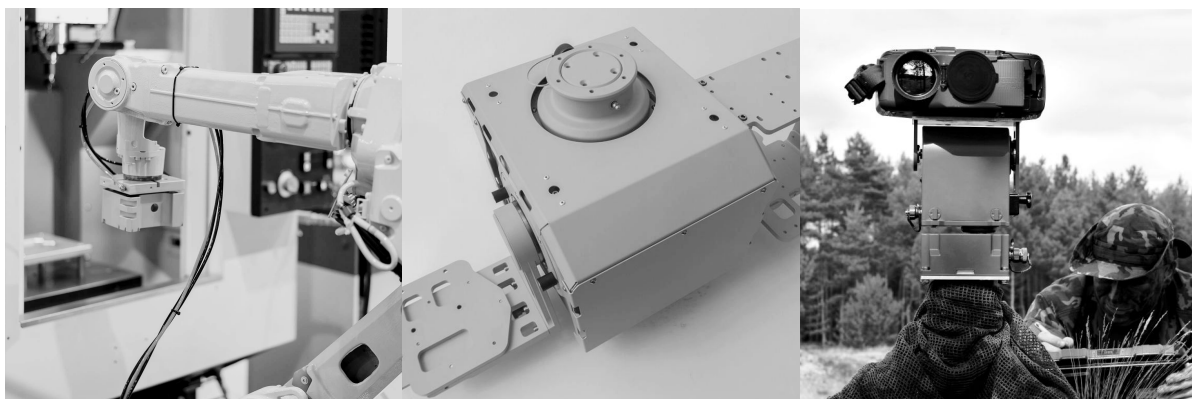
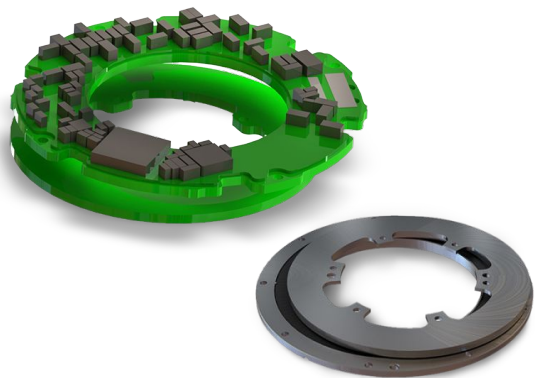
## ELECTRICAL ENCODER

The electric encoder has taken a revolutionary position sensing technology, originally developed for harsh environment specialized applications, and made it available for today's broader range of defense, aerospace and instrumentation motion control requirements. Non-contact technology relies on interaction between the measured displacement and a space/time modulated electric field. It offers a blend of features unequalled by optical or magnetic encoders.

## VLX - INDUSTRIAL ENCODERS

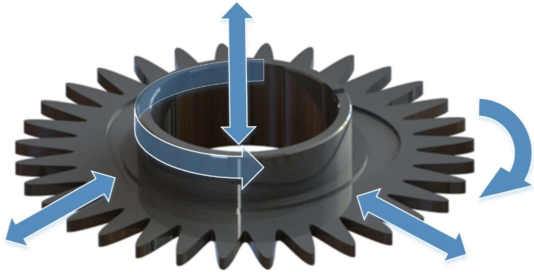
The VLX encoder series is a new model of encoders that is designed to be integrated into actuators. It was initially designed for compact collaboration robots, but has due to their great advantages been used in several different applications.

The Capacity encoder, can due it performance and high temperature range (up to 100°) be installed inside the motor. The capacitive signal is also immune to the motor magnetic fields.



# PENLINK | ELECTRICAL ENCODERS

Light, low profile and absolute encoder!

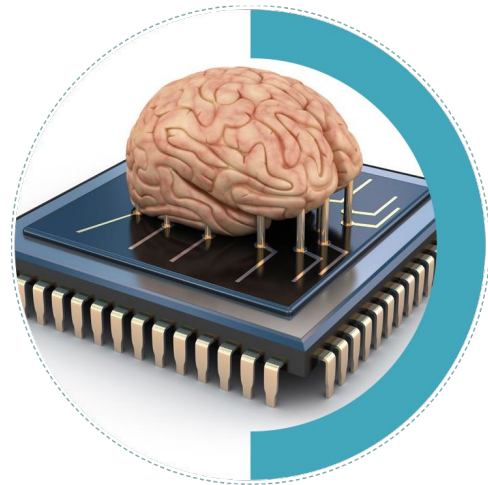


## HOLISTIC CAPTIVE ROTOR

The holistic structure of the Electric Encoder™ makes it unique. Its output reading is the averaged outcome of the entire area of the rotor. This feature allows the encoder a tolerant mechanical mounting and to deliver outstanding precision.

## 2nd GENERATION CORE, FULLY DIGITAL

Better define different output resolutions, very high latency, and high absolute position bandwidth.



## MODELS

Two main models that we use for our electrical encoders are, get in touch for more in depth info:

- Harsh environment DS, DF
- Industrial automation - DX, VLX

# P | ELECTRICAL ENCODERS

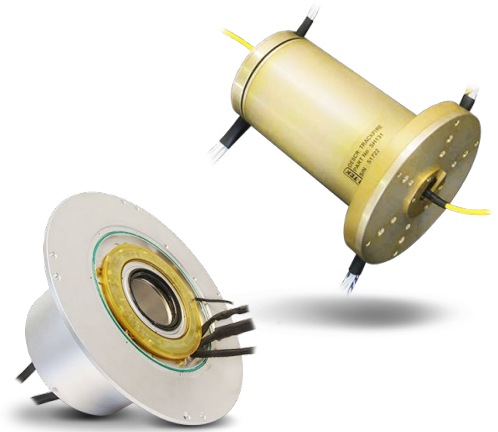
Light, low profile and absolute encoder!

## INTEGRATION

If your project requires integration with other products such as slip rings, drives and motors we can help you with that.

Penlink has a lot of knowledge when it comes to our products and together with our suppliers we can offer full support when it comes to integrations. Get in touch with us to learn more about how this process is done.

Together we can make great design!



## CUSTOMIZED

Beside the standard assortment Penlink has the capability to provide special designed electrical encoders. The special electrical encoder products can be designed based on a sketch or an idea from the customer. We implement different technologies to fulfill our customer's requirement. Get in touch with one of us here at Penlink and learn more!



Let's talk business!

Get in touch with  
us at Penlink!  
No question is too  
small or too big.



#### EMAIL

info@penlink.se



#### PHONE

+46 8-551 158 90



#### HEADQUARTERS

Penlink AB, Vretensborgsvägen 28,  
SE-126 30 Hägersten, Sweden



Solid Project  
Management



Engineering &  
Product Design



Commercial  
*Off The Shelf* Products



Simulation &  
Design Verification



Customized Design &  
Integrated Solutions



Assembly  
& Testing



Cutting-edge  
Technology



Value-added Products  
& Services