

# PENLINK | PAN & TILT TECHNOLOGY

Cameras, Slip Rings, Drives and much more!

- **We have a wide range of state of the art products that will fit your PAN & TILT requirements!**

Pan-tilt-zoom cameras can be an essential part of modern surveillance systems. They can direct the attention to suspicious events. That's why it's important for us to provide you with high quality components for your project. Our partners offers a wide range of products that we can help you integrate. Drives, motors, encoders, slip rings, cameras, INS systems and much more! Please get in touch with our team!

## PENLINK



## WORKING TOGETHER TO MAKE GREAT DESIGN

Our team at Penlink uses the most advanced tools to create, debug, maintain and support our customers in the most transparent, agile and effective way.



Transparent Documentation  
& Version Control



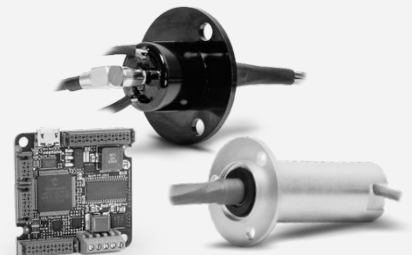
Agile Project Management  
& Issue Tracking



World Standard Electronics  
Design Software



Online and Offline  
First-Class Support



# PENLINK | PAN & TILT TECHNOLOGY

Cameras, Slip Rings, Encoders and much more!



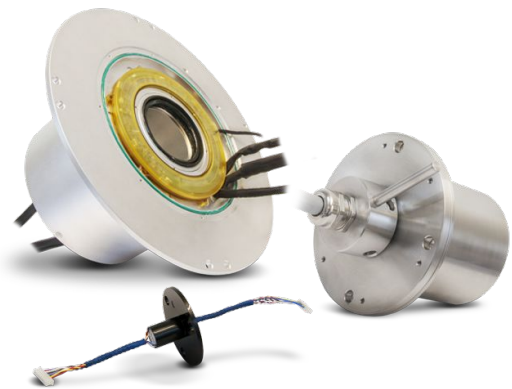
## ADVANCED CAMERA SYSTEMS

Penlink has got an extensive range of low-light cameras. They offer high frame rate, wide dynamic range. Offered in sensor technologies such as sCMOS with large pixel pitch, SWIR and EMCCD. All our cameras can be delivered bespoke with the output desired.

We can also integrate lenses and transmission cards.

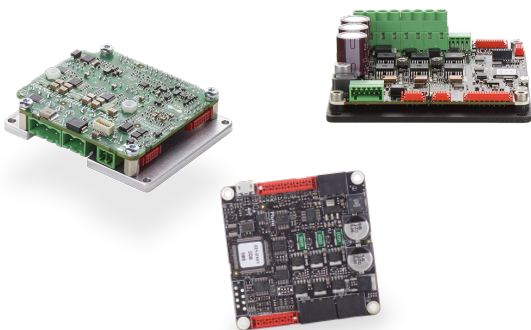
## SMALL COMPACT SLIP RINGS

A slip ring is a component for transmission of power and data signals to a freely rotating unit such as a radar aerial or the rotor blades of a wind turbine. Our slip rings can be used in any mechanical device that requires free rotation while transmitting power or electrical data signals. It is known that slip rings can improve the performance and simplify the design of many applications.



## CUSTOMIZED DRIVES

Our drives includes high performance - high power density and powerful control software for most motor technologies including servo motors (DC brush and brushless), microstepping, and step motors. Advanced features include field buses (CANopen, EtherCAT, Ethernet/IP), sinusoidal commutation, field oriented control, advanced PID filters and much more.



# PENLINK | PAN & TILT TECHNOLOGY

Customization and integration, two of our specialities!

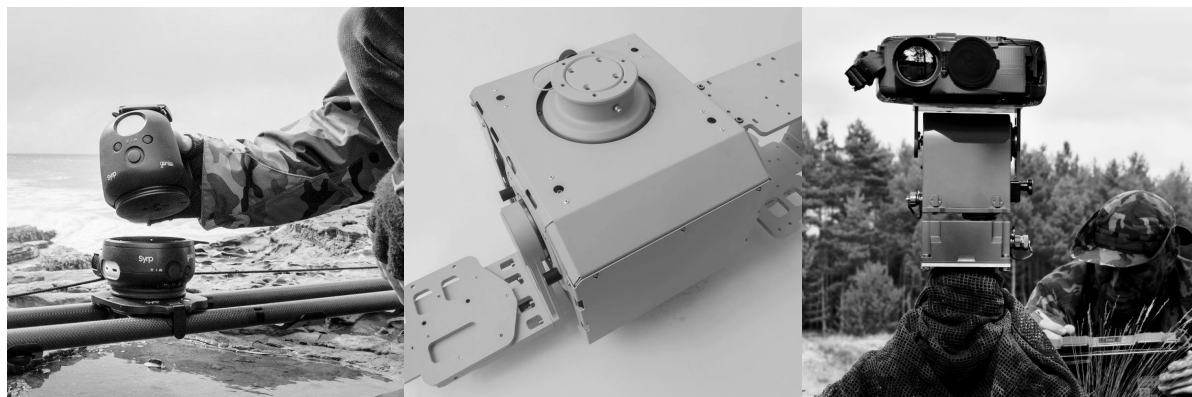
## BRUSHLESS DC MOTORS / TORQUE MOTORS

Extensive range of electric motors from a few Watts to more than 200 kW. These motors are intended to fit on-board aerospace, defence and other demanding environments. They are available as a LRU (housed) or frameless that can be integrated by the customer.



## INTEGRATION

Penlink has the capability to provide the services of integrated components. These integrated solutions can be designed based on a sketch or an idea from the customer. We implement different technologies to fulfill our customer's requirement. It can be servo-, camera, rotary joint-based solutions. Please don't hesitate to ask us questions!



Get in touch with  
us at Penlink!  
No question is too  
small or too big.



#### EMAIL

info@penlink.se



#### PHONE

+46 8-551 158 90



#### HEADQUARTERS

Penlink AB, Vretensborgsvägen 28,  
SE-126 30 Hägersten, Sweden



Solid Project  
Management



Engineering &  
Product Design



Commercial  
*Off The Shelf* Products



Simulation &  
Design Verification



Customized Design &  
Integrated Solutions



Assembly  
& Testing



Cutting-edge  
Technology



Value-added Products  
& Services