

PENLINK

Speed and safety with our pile driving solutions

APPLICATION NOTE

Maximize your pile driving performance with our products, they deliver revolutionary safety and speed!

Search no further, Penlink provides expertise manufacturing and design when it comes to pile driving solutions and other applications in the same category.

Our products (*swivels*, *slip rings* and *magnetic encoders*) provide reliability and minimizing of downtime. We can guarantee you that our products will keep your application going for a long time as our solutions handles high vibration and harsh environments.

No matter what solutions you are looking for we have the knowledge and resources to design and manufacture customized options if needed. Which makes it easier for you to find the right component for your project.



WORKING TOGETHER TO MAKE GREAT DESIGN

SPEED & SAFETY WITH OUR PILE DRIVING SOLUTIONS!

Our team at Penlink use the most advanced tools to create, debug, maintain and support our customers in the most transparent, agile and effective way.



Transparent Documentation
& Version Control



Agile Project Management
& Issue Tracking



World Standard Electronics
Design Software



Online and Offline
First-Class Support



WHY YOU SHOULD CONSIDER OUR SOLUTIONS

SPEED & SAFETY WITH OUR PILE DRIVING SOLUTIONS!



STANDARD, CUSTOMIZATION & RETROFIT

Big part of our business comes to retrofitting present components in various application. We have the ability to provide solutions according to the various challenges that can arise in your application.

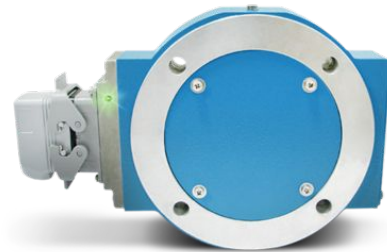


THE APPLICATION MUST FUNCTION RELIABLY

When used outdoors on building sites, the units that we supplied are according to the environmental requirements. We do quality control and testing are done on each component before installation..

RELIABLE AND HIGHLY CONFIGURABLE

We build the units upon required need together with our experience from various applications. Complete quality control, design, manufacture and qualified to premium solutions.



TECHNOLOGICAL ADVANTAGES

- + Applied for harsh environment
- + Output/connections options
- + Low heat generation
- + Corrosion resistance
- + Protection degrees
- + High performance
- + Combine solution
- + Highly configurable

APPLICATIONS THAT USES OUR PRODUCTS

SPEED & SAFETY WITH OUR PILE DRIVING SOLUTIONS!

APPLICATIONS THAT USES OUR PRODUCTS

- + Boring pile
- + Drilling pile
- + Hammer pile
- + Vibratory pile
- + Press-in pile



CUSTOM ROTARY UNIONS

SPEED & SAFETY WITH OUR PILE DRIVING SOLUTIONS!

CUSTOM ROTARY UNION PROJECT 038

4 passage rotating union designed and customized for a tracked vehicle. Features include a direct OEM replacement design - integrating into the existing space and bolt patterns.



CUSTOM ROTARY UNION PROJECT 042

6-passage rotary union designed as a direct OEM replacement installed on a mobile excavator. Features include a customer-specified design that offers increased service life and cost reduction.

CUSTOM ROTARY UNION PROJECT 041

Multichannel passage rotating union for the OEM machines. Customized to operate on various application with coated surface to increase protection from outdoor impact.



CUSTOM ROTARY UNIONS

SPEED & SAFETY WITH OUR PILE DRIVING SOLUTIONS!



CUSTOMIZED ROTARY UNION 040

5 passage rotary union designed for an intermediate size mobile truck-mounted crane application. Features include an integrated interface for slip ring and/or encoder. Specialized high temperature rated design for harsh outdoor environment.



CUSTOMIZED ROTARY UNION 039

4 passage rotary joint designed for controls and auxiliary functions for a telescoping manlift application. Features include an electrical slip ring and/or encoder for a complete electrical, pulses and fluid solution.

STANDARD, MODIFIED OR CUSTOM SLIP RINGS

SPEED & SAFETY WITH OUR PILE DRIVING SOLUTIONS!



MODULAR SLIP RING 009

Modular 1:1 interface installation for OEM excavator cabin. High protection degree to handle various of whether conditions with the option of getting connectors/pins installed.

MODIFIED THROUGH BORE SLIP RING 015

Modified standard solution to fit installation on a OEM winch mounted on a mobile crane. Tolerance to high shock and vibration to increase life cycle and various transmission.



STANDARD, MODIFIED OR CUSTOM SLIP RINGS

SPEED & SAFETY WITH OUR PILE DRIVING SOLUTIONS!

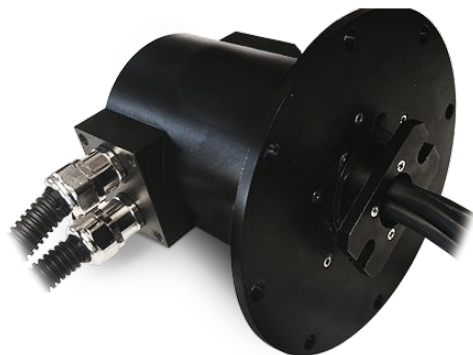


MODULAR SLIP RING 013

The unit is built on a base module to formfit customers different mobile machines depending on electrical specification. It uses the same housing with different mounting flange for easy installation.

MODULAR SLIP RING 014

This slip ring has IP65 which means it can withstand harsh environment, 24x10A 400V for power and control signals. These slip ring are design to fit the current design of a customer.



MAGNETIC ENCODERS

SPEED & SAFETY WITH OUR PILE DRIVING SOLUTIONS!

THE AV115 ENCODER

The AV115 modular magnetic encoders fit standard 115mm flange motors. Adapters are available to fit European B-flange (85mm/100mm BC) motors. First, the magnetic sensors are fully potted to withstand dirt and liquids. No glass disks, no optics to clog. There are no moving, wearing parts! The patented Wide-Gap™ Cam Screw Rotors™ put an end to sensor damage, are simpler to install, and stay securely mounted to the shaft.



THE AV56 ENCODER

This encoder is a great fit heavy mill duty applications. It has a standard fit for 4.5" C-Face motors such as Marathon Blue and Black Max, as well as Baldor Reliance models. The stainless steel AV56S is designed for washdown and marine duty. This encoder feature simple installation, durable construction, and clear diagnostics to eliminate encoder-related downtime.

THE AV850 ENCODER

This encoder is great for heavy mill duty applications. It has a fit for standard 8.5" FC-Face motors. Quite simply, the AV850 is designed to eliminate encoder failures.

All AV850 electronics are fully encapsulated. There are no moving wearing parts. AV850 sensors locate over 4X farther from the rotor than the competition; no more sensor/rotor grinding!



PENLINK

Let's talk business!

WWW.PENLINK.SE

Get in touch with
us at Penlink!
No question is too
small or big.



EMAIL

info@penlink.se



PHONE

+46 8-551 158 90



HEADQUARTERS

Penlink AB, Vretensborgsvägen 28,
SE-126 30 Hägersten, Sweden



Engineering &
Product design



Inspection &
Quality management



Simulation &
Design verification



Assembly &
Testing



Advanced
Manufacturing



Value-Added
Products & Services